

McAfee®



SPECIFICATIONS

McAfee Email Security Appliance model 3400

System configuration

- Two hard drives (RAID-1)
- 8 GB RAM
- Dual Intel processors
- Two 10/100/1000 networking ports
- Two 1000 Base SX fiber ports
- Supports both IPv4 and IPv6
- Dual hot-swappable power supplies
- Remote access card
- Out-of-band management

Dimensions

- 1U server, 16.7" (W) x 1.7" (H) x 30.4" (D)

Keep Spam Out with Proven Anti-spam Technology

- Detect and block more than 98 percent of spam, including image and PDF spam, with no false positives as measured by independent test labs
- Streaming updates quickly shut down new forms of spam
- Increase control with built-in quarantine and advanced spam management

High-performance Message Transfer Agent (MTA)

- Reroute traffic on the fly based on criteria set by the administrator
- Address stripping stops sensitive data from leaving your perimeter
- Track messages from the gateway to your quarantine to make it easy to determine the final disposition of any given message
- Access comprehensive data for analyzing both inbound and outbound traffic patterns
- Find emails for your users more easily with enhanced on-box quarantine search

Detect and Intercept Viruses and Spyware

- Block viruses and spyware that travel through email—before they reach your mail server or infect your systems

Improve Email Privacy Compliance

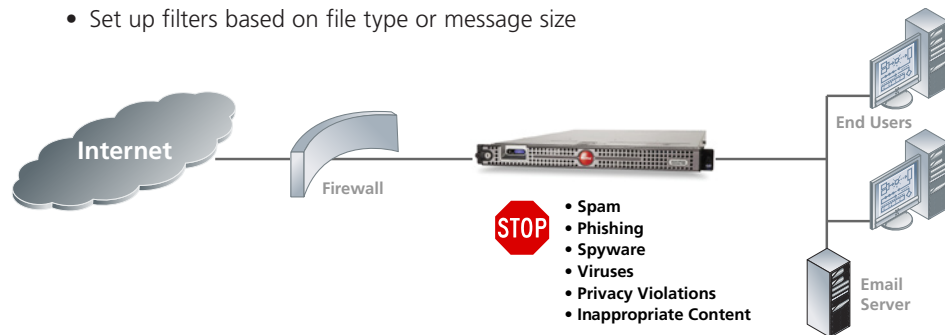
- Use predefined dictionaries (English only) and heuristics to automatically scan email for financial and private information as defined by the Health Insurance Portability and Accountability Act (HIPAA), the Gramm-Leach-Bliley Act (GLBA), the Sarbanes-Oxley Act (SOX), and Payment Card Industry (PCI) regulations
- Block, monitor, or encrypt detected messages to ensure compliance
- Scan more than 300 different types of attachments based on true file type

Advanced Spam Management Features

- Allow users to manage their personal blacklists, whitelists, and spam quarantines through daily digests or live access to the quarantines
- Store quarantined messages on the appliance or a Windows server running McAfee Quarantine Manager (included)

Advanced Content Filtering

- Control sensitive data to comply with email privacy regulations and corporate governance demands
- Build custom content-filtering policies based on custom-defined lexicons or built-in lexicons for email privacy regulations, objectionable content, and intellectual property
- Scan keywords and regular expressions inside messages and attachment
- Set up filters based on file type or message size



McAfee, Inc. 3965 Freedom Circle, Santa Clara, CA 95054, 888.847.8766, www.mcafee.com

McAfee, Avert, and/or other noted McAfee related products contained herein are registered trademarks or trademarks of McAfee, Inc., and/or its affiliates in the US and/or other countries. McAfee Red in connection with security is distinctive of McAfee brand products. Any other non-McAfee related products, registered and/or unregistered trademarks contained herein is only by reference and are the sole property of their respective owners. © 2008 McAfee, Inc. All rights reserved.

1-nps-smg-003-0408